



PERI, the Company

WELCOME TO PERI

---



Our company | Formwork

# FORMWORK SCAFFOLDING ENGINEERING



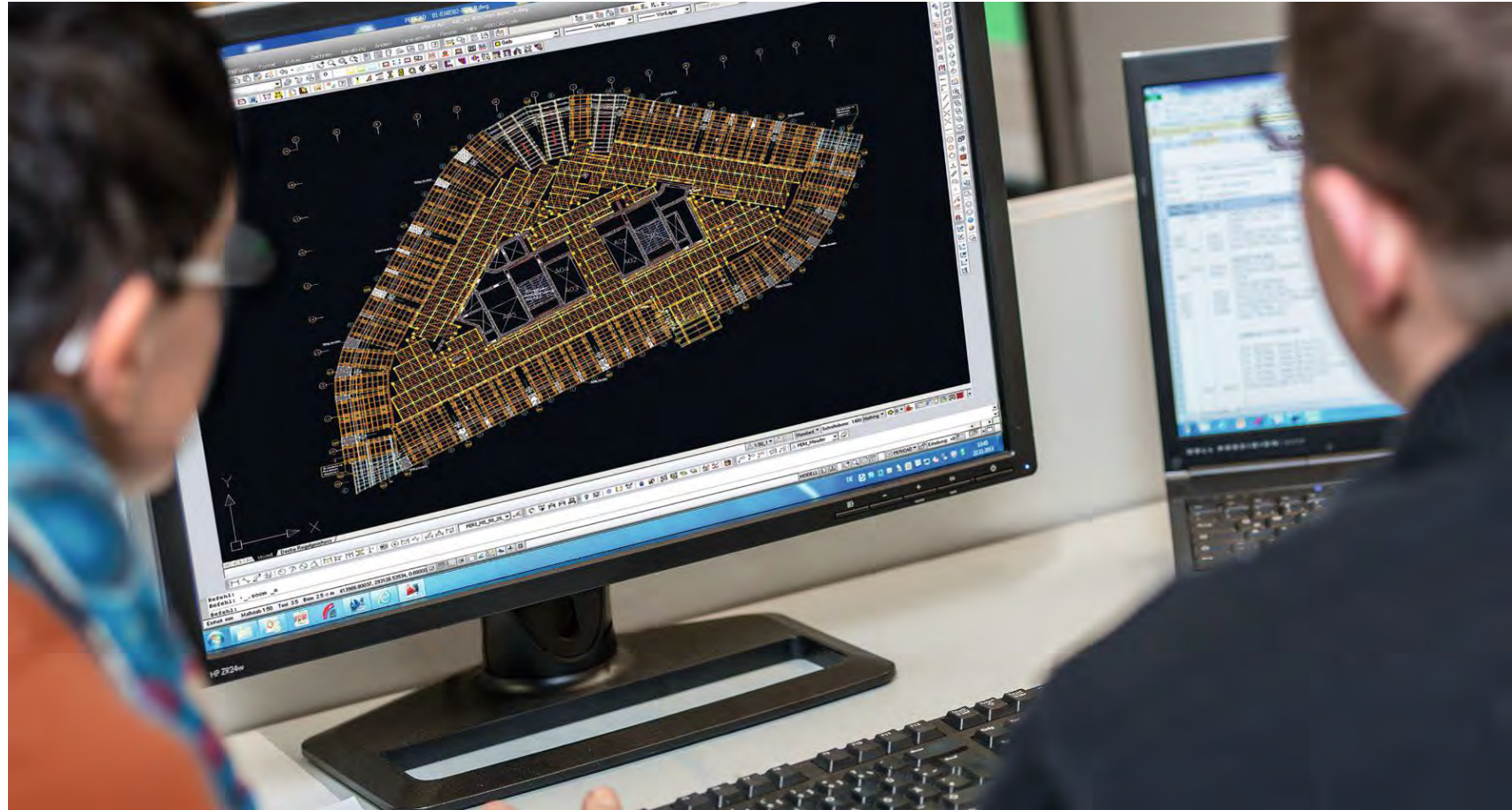
Our company | Scaffolding

# FORMWORK SCAFFOLDING ENGINEERING



Our company | Engineering

# FORMWORK SCAFFOLDING ENGINEERING



# COMPANY AND MANAGEMENT

---

The best possible solution for our customers



Our company

## PERI HEADQUARTERS IN WEISSENHORN

---

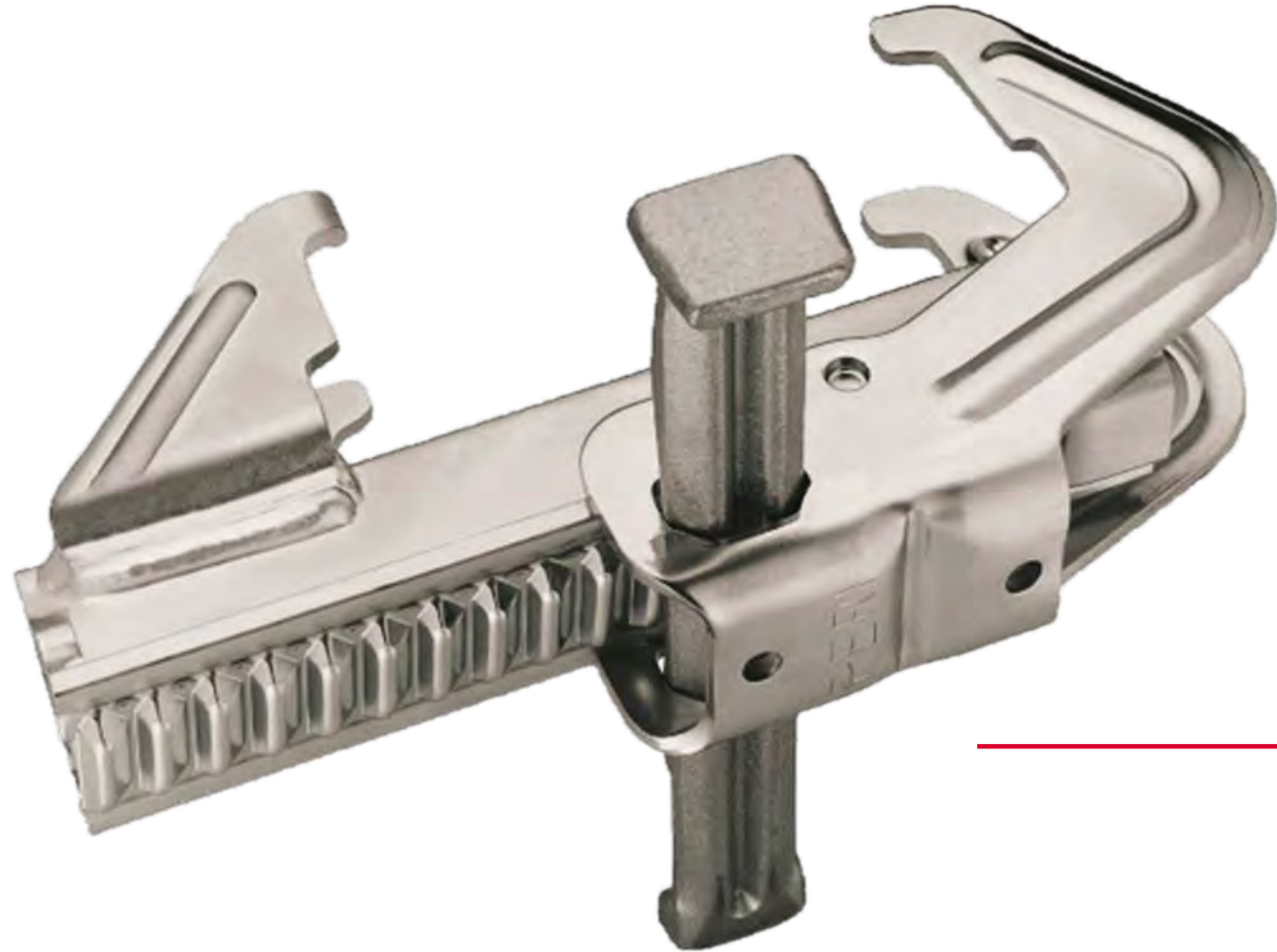
Here, system equipment is  
**developed, produced and  
held** in readiness

Our company

## KEY OBJECTIVES FOR PERI DEVELOPMENTS

**PERI provides the best possible solution**

- Fast working leading to a reduction in labour costs
- Safe and reliable use regarding work safety and quality of execution
- Efficient solutions for increasing economic efficiency for PERI customers





### Our company

## PERI HEADQUARTERS IN WEISSENHORN, GERMANY, 1973

---

- Since the company was founded in 1969, this guiding principle has characterized our services for our customers
- As a family-owned business in the second generation, we will continue to strive in the future to offer the best formwork and scaffolding solutions for all types of projects





Our company

## THE PERI GROUP MANAGEMENT BOARD TODAY

---

left to right

**Jürgen Voss,  
Leonhard Braig,  
Christian Schwörer,  
Carl Heathcote,  
Thomas Imbacher**



Our company

## PERI HEADQUARTERS IN WEISSENHORN

---

Here, system equipment is developed, produced and held in readiness

**Campus**, total area 382,000 m<sup>2</sup>

# PERI HISTORY

Our Company



**Artur Schwörer (1933–2009)**  
Founder of PERI GmbH



— 1969 **Artur Schwörer establishes the PERI company with his wife Christl.**

— 1970

— 1972

— 1974

— 1985



1969 Artur Schwörer establishes the PERI company with his wife Christl.

1970 **First major contract – ship lift near Lüneburg**

World's largest double vertical ship lift connects the Mittelland Canal and River Elbe accommodating a height difference of 38 m.

1972

1974

1985

2000



1969 Artur Schwörer establishes the PERI company with his wife Christl.

1970 First major contract – ship lift near Lüneburg

1972 **PERI expands in Germany**

1974

1985

2000



1970 First major contract – ship lift near Lüneburg

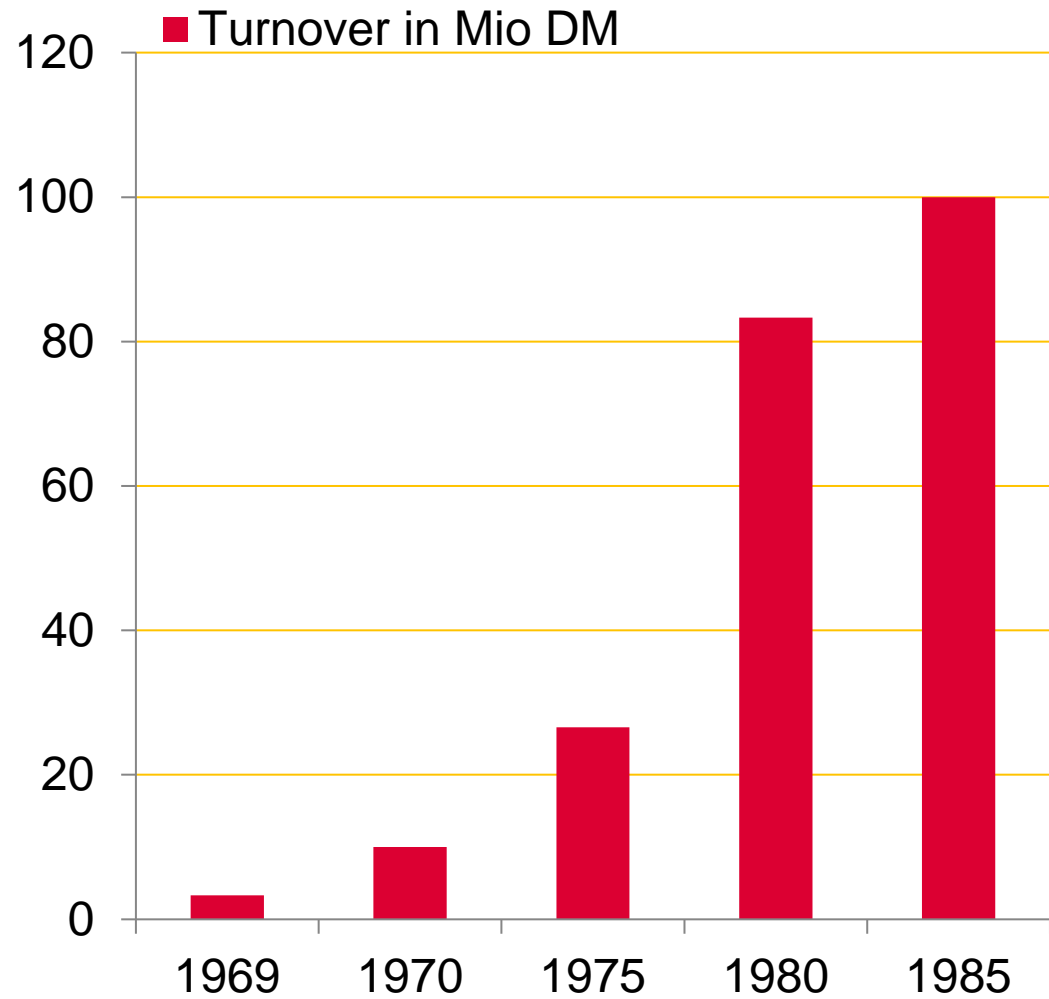
1972 PERI expands in Germany

**1974 First PERI subsidiaries in Europe**

1985

2000

2011



- 1970 First major contract – ship lift near Lüneburg
- 1972 PERI expands in Germany
- 1974 First PERI subsidiaries in Europe
- 1985 PERI generates DM 100 million for the first time**
- 2000
- 2011





— 1972 PERI expands in Germany

— 1974 First PERI subsidiaries in Europe

— 1985 PERI generates DM 100 million  
for the first time

— **2000 20,000 m of girders produced daily**

— 2011

— 2016



1974 First PERI subsidiaries in Europe

1985 PERI generates DM 100 million for the first time

2000 20,000 m of girders produced daily

**2011 Construction project of the century:  
expansion of the Panama Canal**

2016

2019



1985 PERI generates DM 100 million for the first time

2000 20,000 m of girders produced daily

2011 Construction project of the century:  
expansion of the Panama Canal

**2016 Development of a new scaffolding  
production facility in Günzburg near Ulm**

2019

2020



2000 20,000 m of girders produced daily

2011 Construction project of the century:  
expansion of the Panama Canal

2016 Development of a new scaffolding  
production facility in Günzburg near Ulm

2019 **For 50 years, the family company PERI  
stands on the market**

2020

2021



- 2011 Construction project of the century: expansion of the Panama Canal
- 2016 Development of a new scaffolding production facility in Günzburg near Ulm
- 2019 For 50 years, the family company PERI stands on the market
- **2020 Mobile 3-D visualisations and other digitalisations**
- 2021
- 2022



- 2011 Construction project of the century: expansion of the Panama Canal
- 2016 Development of a new scaffolding production facility in Günzburg near Ulm
- 2019 For 50 years, the family company PERI stands on the market
- 2020 Mobile 3-D visualisations and other digitalisations
- 2021 3D Construction Printing: the largest 3D-printed multi-family house in Europe**
- 2022



- 2016 Development of a new scaffolding production facility in Günzburg near Ulm
- 2019 For 50 years, the family company PERI stands on the market
- 2020 Mobile 3-D visualisations and other digitalisations
- 2021 3D Construction printing: the largest 3D-printed multi-family house in Europe
- **2022 bauma, Munich**
- 2023



# **53 YEARS AND FAMILY-OWNED**

---

Our Company





Our company

FAMILY-OWNED  
FROM THE  
**SCHWÖRER-FAMILY**

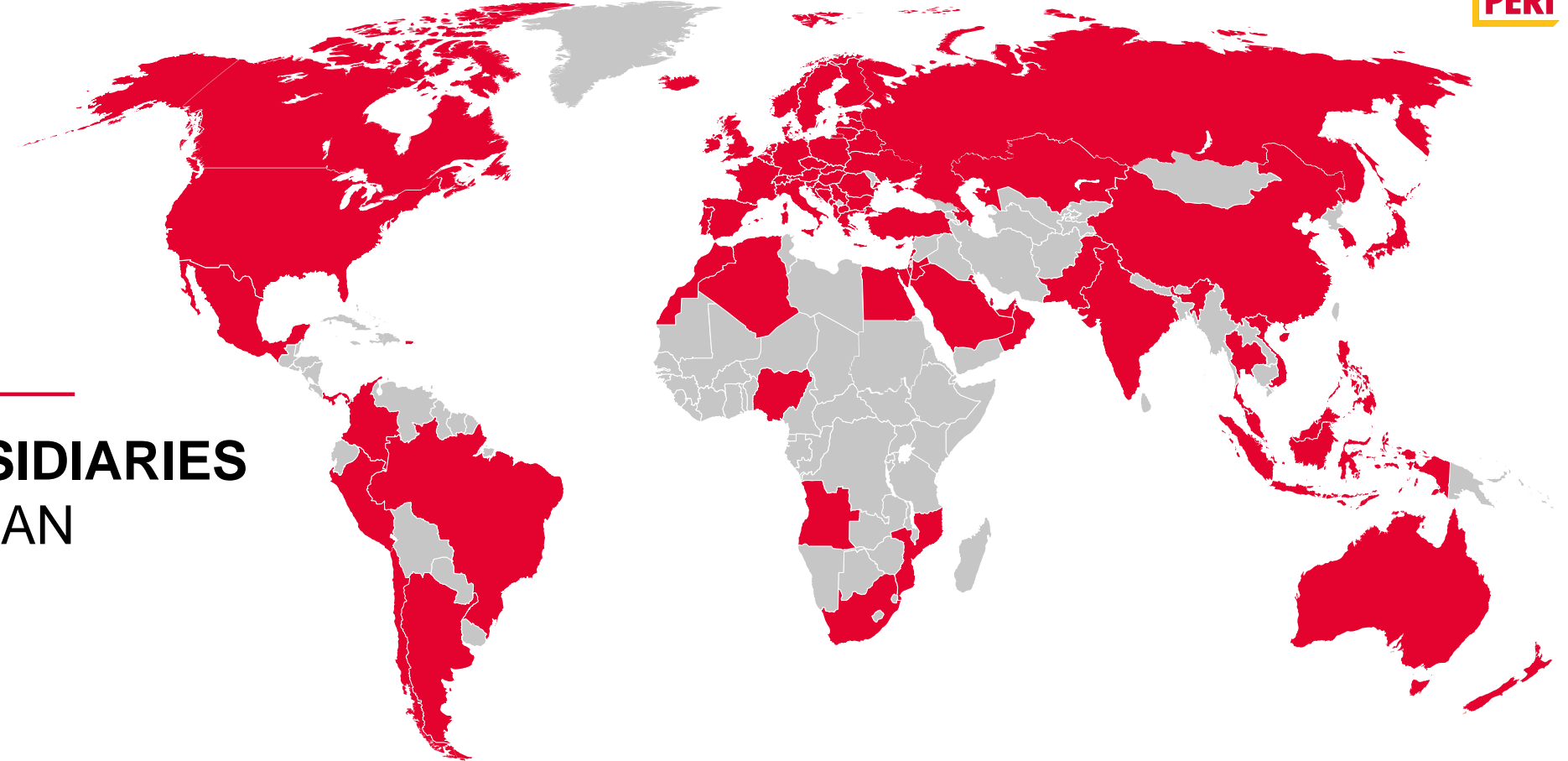
---

**53 Years PERI** Family-run  
company in the 2<sup>nd</sup> generation

# SUBSIDIARIES WORLDWIDE

---

Our Company



**PERI WORLDWIDE**

**OVER 60 SUBSIDIARIES  
AND MORE THAN  
160 YARDS**

**The Americas**

- 1982 United States of America
- 1995 Canada
- 1996 Brazil, Argentina, Chile
- 2003 Mexico
- 2008 Panama, Peru
- 2012 Colombia

**Africa**

- 2011 South Africa
- 2012 Algeria
- 2014 Nigeria
- 2015 Namibia, Mozambique
- 2016 Morocco

**Asia**

- 1990 Turkey
- 1991 Singapore, Malaysia
- 1994 Korea
- 1997 United Arab Emirates
- 1999 Israel
- 2005 Japan
- 2007 Kazakhstan, Qatar, India
- 2013 Saudi Arabia, Kuwait
- 2014 Philippines, Lebanon
- 2015 Thailand, Hong Kong
- 2017 Vietnam
- 2018 Indonesia, China

**Europe**

- 1969 Germany
- 1974 Switzerland, France
- 1975 Spain
- 1979 Belgium/Luxembourg, Netherlands
- 1983 Italy
- 1989 United Kingdom
- 1990 Hungary
- 1992 Czech Republic, Austria
- 1993 Finland, Poland, Denmark, Norway, Sweden
- 2018 Ireland

**Oceania**

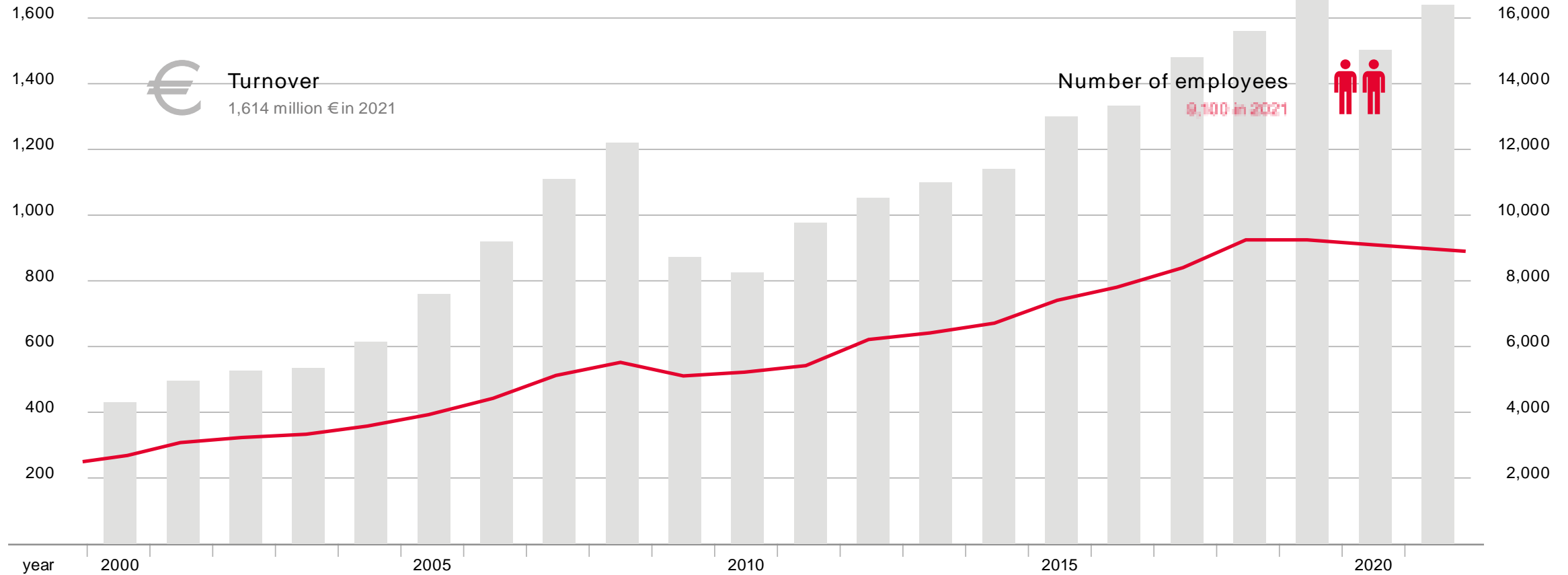
- 1997 Australia

# TURNOVER AND EMPLOYEE DEVELOPMENT

Our Company

## Turnover and employee development

# STEADY GROWTH



# THE PRODUCT PORTFOLIO

---

Our Company

# EFFICIENT SYSTEM EQUIPMENT WITH PRACTICAL DETAILS

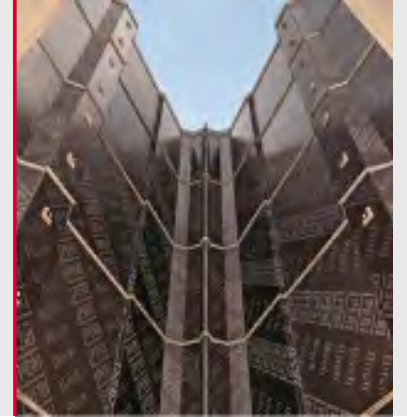
**Wall Formwork**



**Slab Formwork**



**Individual Formwork**



**Column Formwork**



**Universal Formwork**



## Working Scaffolds



**Shoring Systems**



**Temporary Access**



## Protection Scaffold



**Climbing Systems**





## Civil Engineering Systems



## PERI Services



## Apps and Tools



**3-D concrete printing**

**Online  
service platforms**

# INNOVATIONS „MADE BY PERI“

---

Our Company



**1969**  
T 70 Wooden Lattice Girder



**1975**  
Panel Formwork STERA



**1986**  
TRIO Panel Formwork

Focusing on user benefits

# INNOVATIONS MADE BY PERI



**1992**  
SKYDECK Slab Formwork



**1998**  
PERI UP Scaffolding



**1990**  
MULTIPROP System



**2005**  
RCS Rail Climbing System



**2007**  
VARIOKIT Tunnels, Bridges



**2007**  
MAXIMO Panel Formwork



**2010**  
PROKIT Safety System



**2016**  
PERI UP Facade Scaffold



**2016**  
DUO System



**2019**  
SKYMAX Slab Formwork



**2020**  
Mid-Market Products



**2021**  
RCS MAX

# INNOVATIONS „MADE BY PERI“

---

Our Company





Technical processing

---

**CUSTOMER-  
ORIENTED  
ENGINEERING  
SERVICES**



## RENTAL PARKS AND DISTRIBUTION

---

Efficient logistics, reliable deliveries from over 140 rental parks worldwide



## CLEANING AND REPAIRS

---

The latest cleaning and repair procedures guarantee the highest possible quality

# FORMWORK ASSEMBLY

---



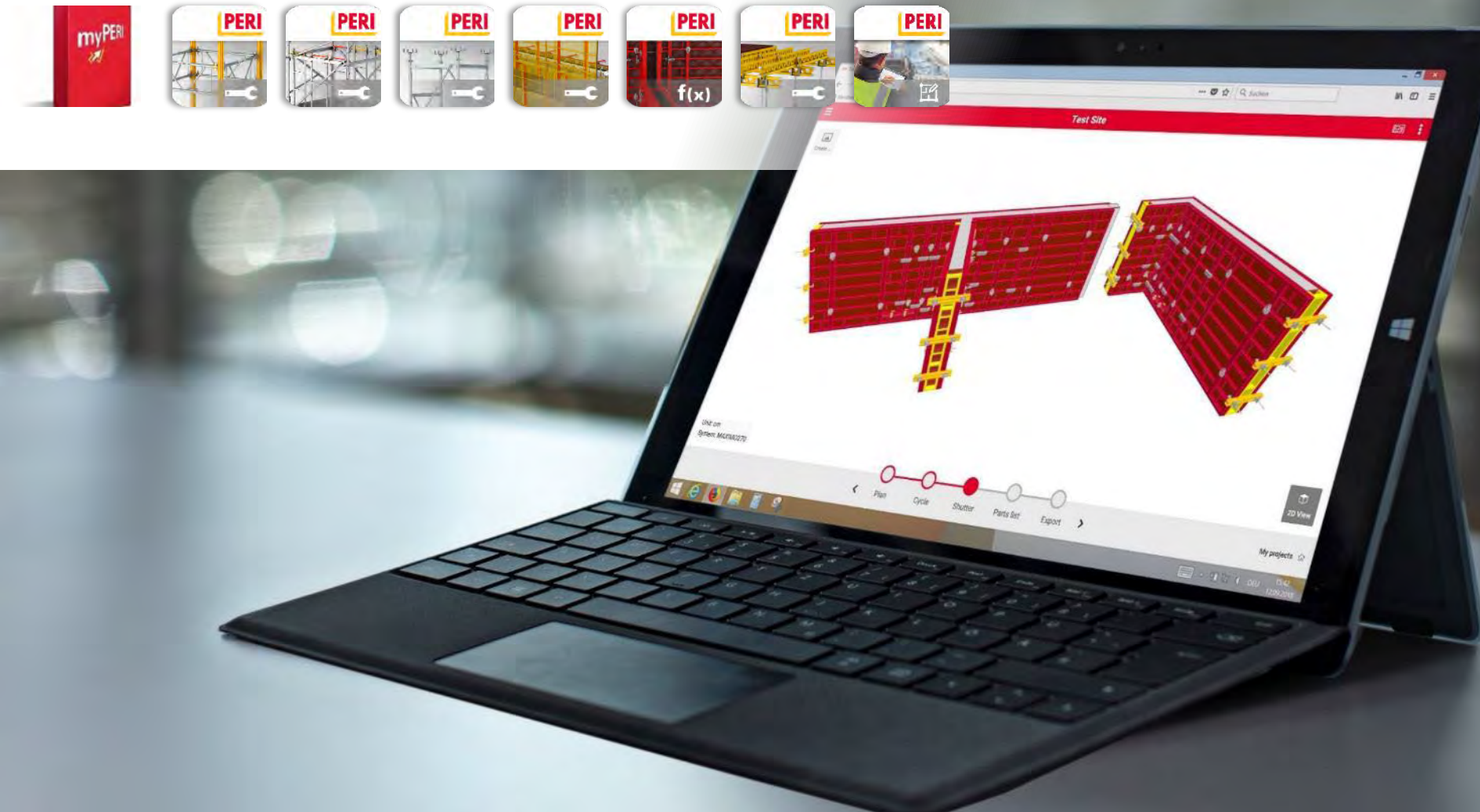
Individual 3D formwork units:  
precision-made for  
complex shapes

# FORMWORK ASSEMBLY

---



Individual 3D formwork units:  
precision-made for  
complex shapes



# SOFTWARE SOLUTIONS AND APPS

Mobile applications with a high everyday utility facilitate work on the construction site and in the office



## FIELD SERVICE

---

Professional on-site support by supervisors and project managers

# PRACTICE-ORIENTED TRAINING

---

Training, seminars and workshops







# PERI PHILOSOPHY

---

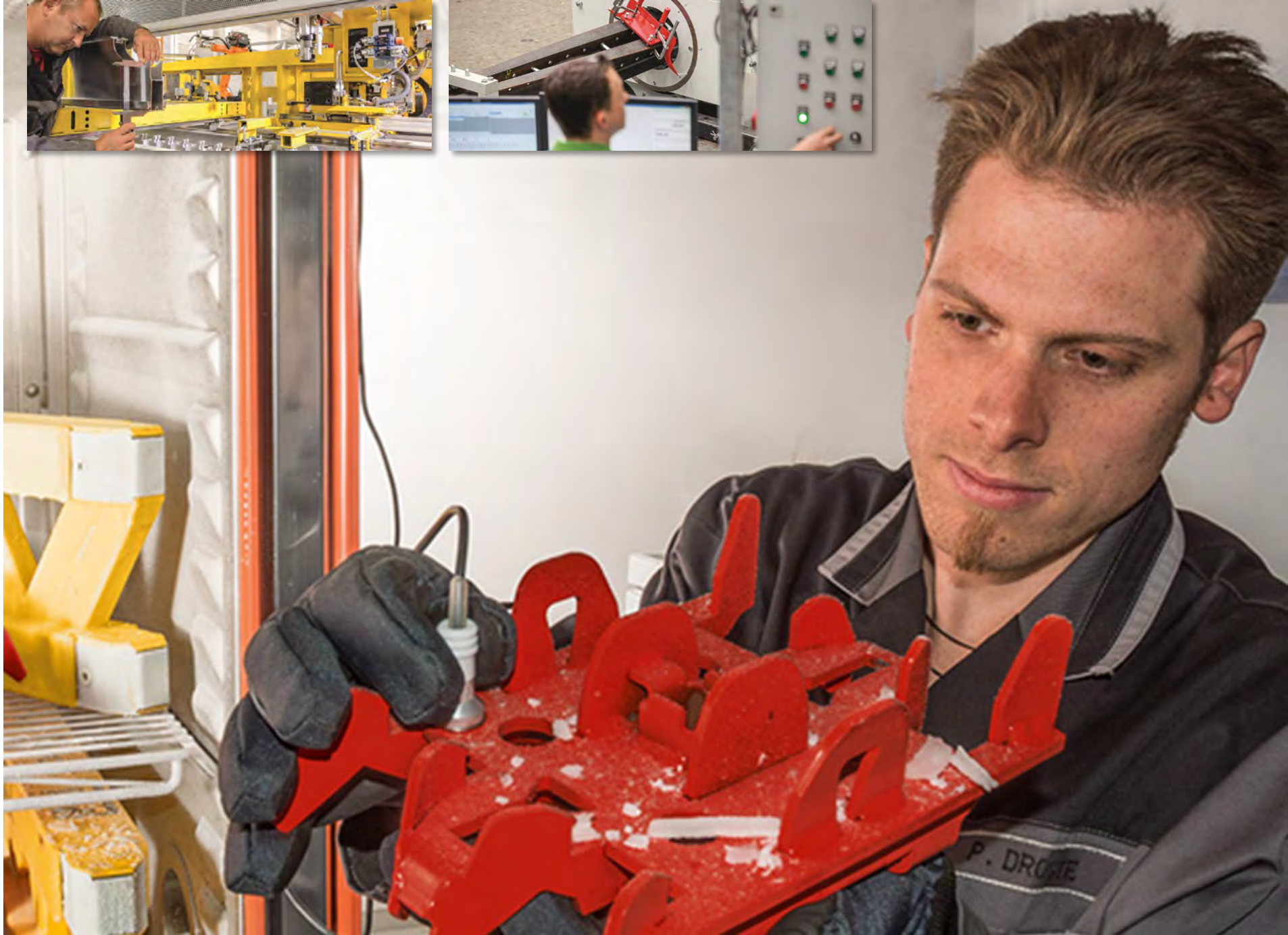
Our company

**RELIABILITY  
QUALITY  
RESPONSIBILITY,  
SUSTAINABILITY**

---

Latest manufacturing processes ensure the highest quality standards





RELIABILITY  
QUALITY  
RESPONSIBILITY,  
SUSTAINABILITY

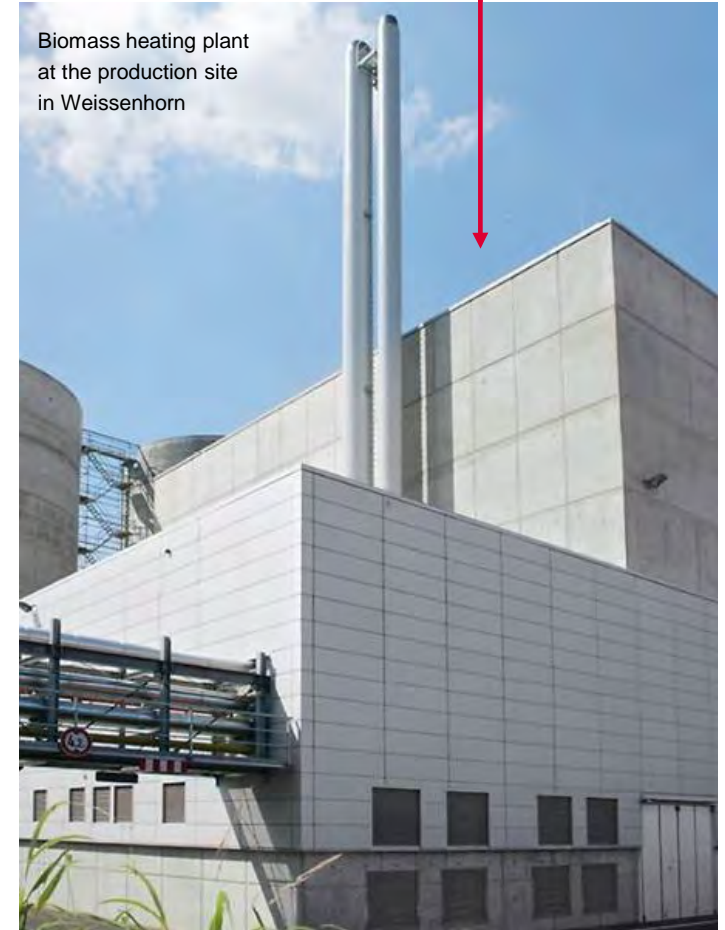
---

Latest material testing procedures guarantee the longevity of the PERI systems

Sustainability as a basic principle – from the development through to transportation

RELIABILITY, QUALITY,  
RESPONSIBILITY,  
**SUSTAINABILITY**

- Careful handling of resources
- Optimized utilization of materials
- Durable products for numerous applications
- Wood from certified growing areas
- Efficient processes and technologies
- Short transport routes



Biomass heating plant at the production site in Weissenhorn



# INTERNATIONAL REFERENCE PROJECTS

---

PERI all over the world



**3D  
CONSTRUCTION  
PRINTING  
APARTMENT  
BUILDING**

**Wallenhausen, Germany**



**3D  
CONSTRUCTION  
PRINTING  
RESIDENTIAL  
BUILDING**

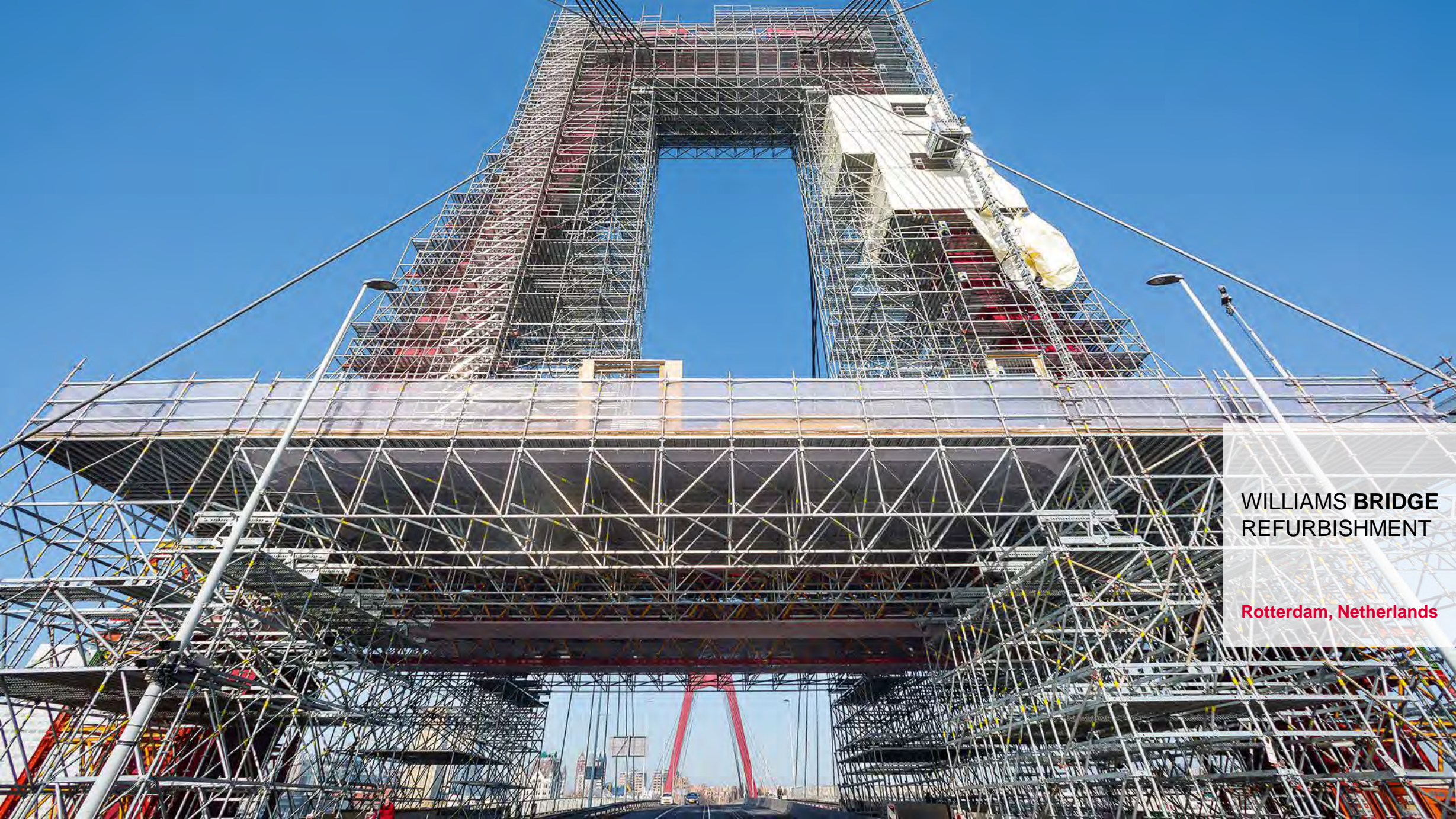
**Beckum, Germany**



**WILLIAMS BRIDGE  
REFURBISHMENT**

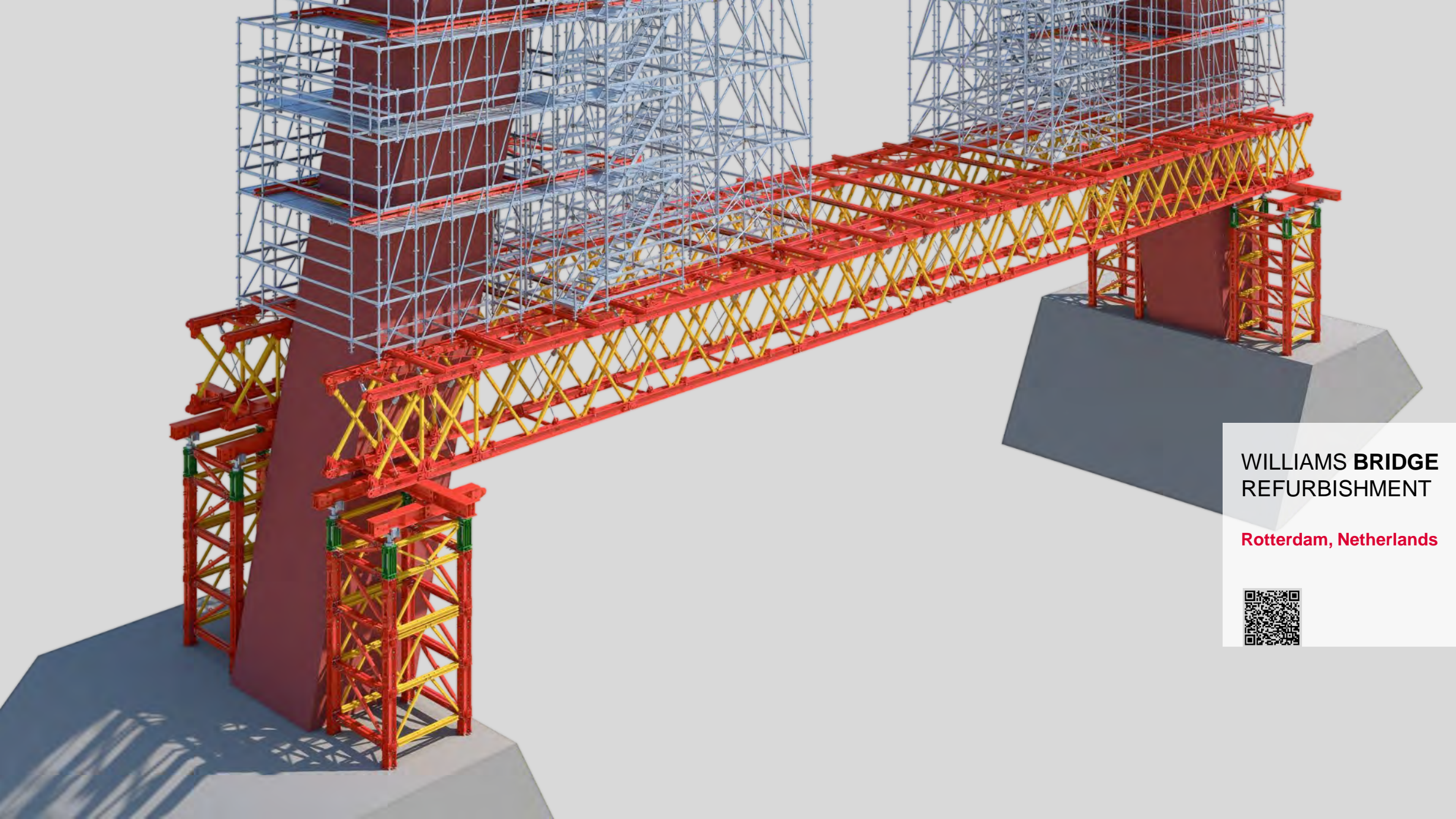
**Rotterdam, Netherlands**





**WILLIAMS BRIDGE  
REFURBISHMENT**

**Rotterdam, Netherlands**



**WILLIAMS BRIDGE  
REFURBISHMENT**

**Rotterdam, Netherlands**





**EVOLUTION AND  
FEDERATION  
TOWER**

**Moscow, Russia**



**PASTEUR TOWER**

**Copenhagen, Denmark**



## RADIO TOWER

Berlin, Germany



**NEUSCHWANSTEIN  
CASTLE**

**Füssen, Germany**



**PEGASUS  
SCULPTURE,  
GULFSTREAM  
PARK**

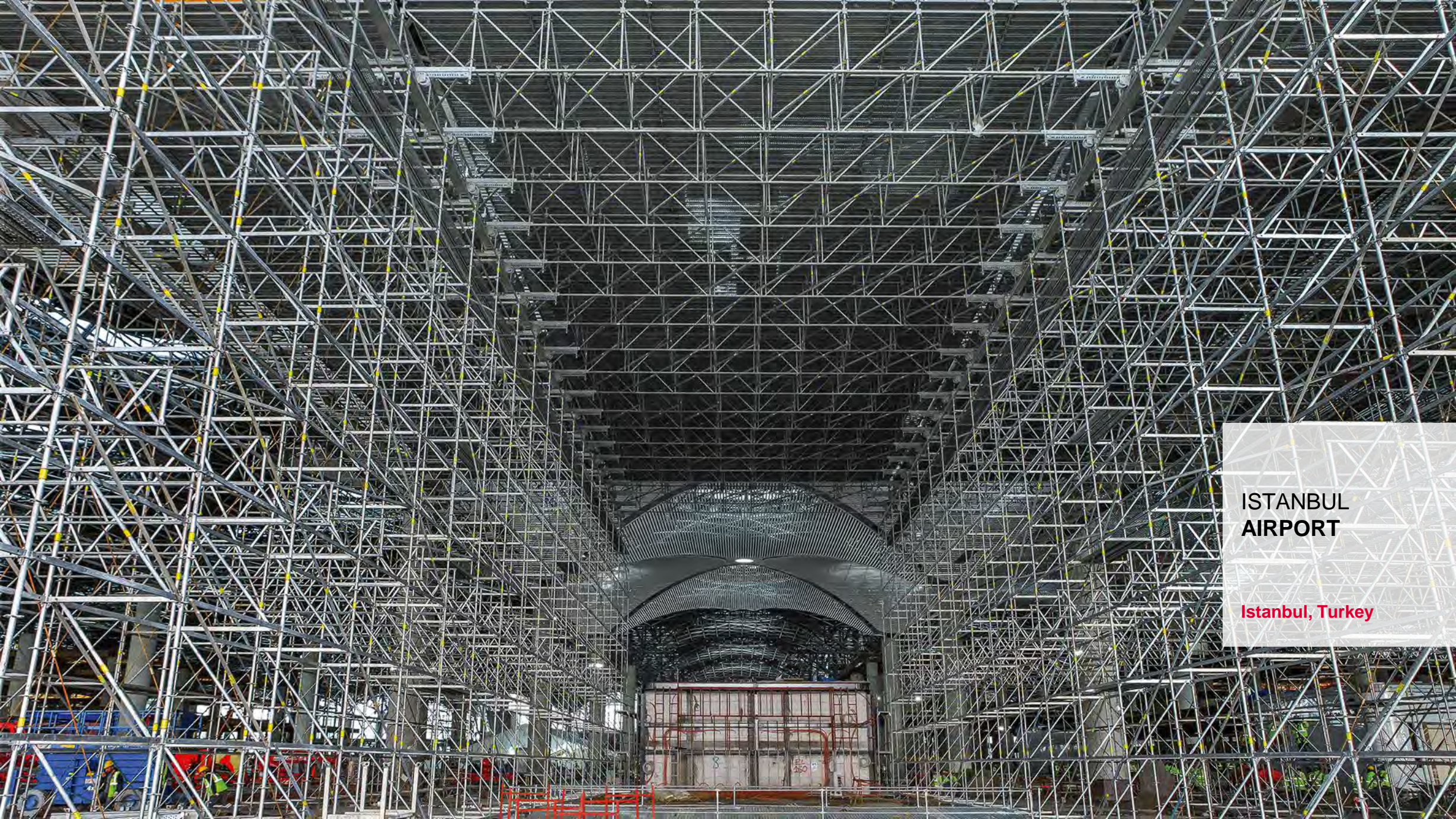
**Hallandale Beach, USA**



**NORTHWEST  
REDWATER  
PROJECT (NWR)**

**Edmonton, Canada**





**ISTANBUL  
AIRPORT**

**Istanbul, Turkey**



**NHOW RAI HOTEL**

**Amsterdam, Netherlands**



**NEW CHAMPLAIN  
BRIDGE**

**Montreal, Canada**



**CEMENTPLANT  
HEIDELBERGER  
CEMENT**

**Schelklingen, Germany**



**CAMPUS RHOEN-  
HOSPITAL**

**Neustadt a.d. Saale,  
Germany**



**LNG TERMINAL  
PROJECT**

**Al Zour, Kuwait**



## YOUNG TOWERS

Tel Aviv, Israel

PERI



**RAILWAY BRIDGE  
REFURBISHMENT**

**Lautrach/Illerbeuren,  
Germany**





**„YPSILON“  
RESIDENTIAL AND  
OFFICE BUILDING**

**Ulm, Germany**



maakrikvartal.ee

**MAAKRI-KVARTAL  
BUSINESS  
COMPLEX**

**Tallinn, Estonia**



GARDEN PARK  
HOTEL

Prad, Italy



**GARDEN PARK  
HOTEL**

**Prad, Italy**



**LAS TRUCHAS  
MOTORWAY  
BRIDGE**

**Compostela, Nayarit,  
Mexico**



**KAI TAK PROJECT**

**HongKong**



**LAÚCA  
HYDROELECTRIC  
POWERPLANT**

**Angola**



**BRIDGE**  
KM 9 AND 104

**Kicevo – Podvis,  
North Macedonia**





karriere  
strabag.com  
STRABAG

TRIPLE  
ARE 50

TRIPLE  
Vienna, Austria



## IN-TOWER

Ingolstadt, Germany



**THE JACX**

**New York, USA**



**MUSEUM  
OF THE SECOND  
WORLD WAR**

**Danzig, Poland**



**UNIVERSITY  
OF TECHNOLOGY**

**Sydney, Australia**





**M 8 ROAD BRIDGE**

**Szczecinek By-Pass,  
Poland**



**LAKHTA CENTER**

**St. Petersburg, Russia**

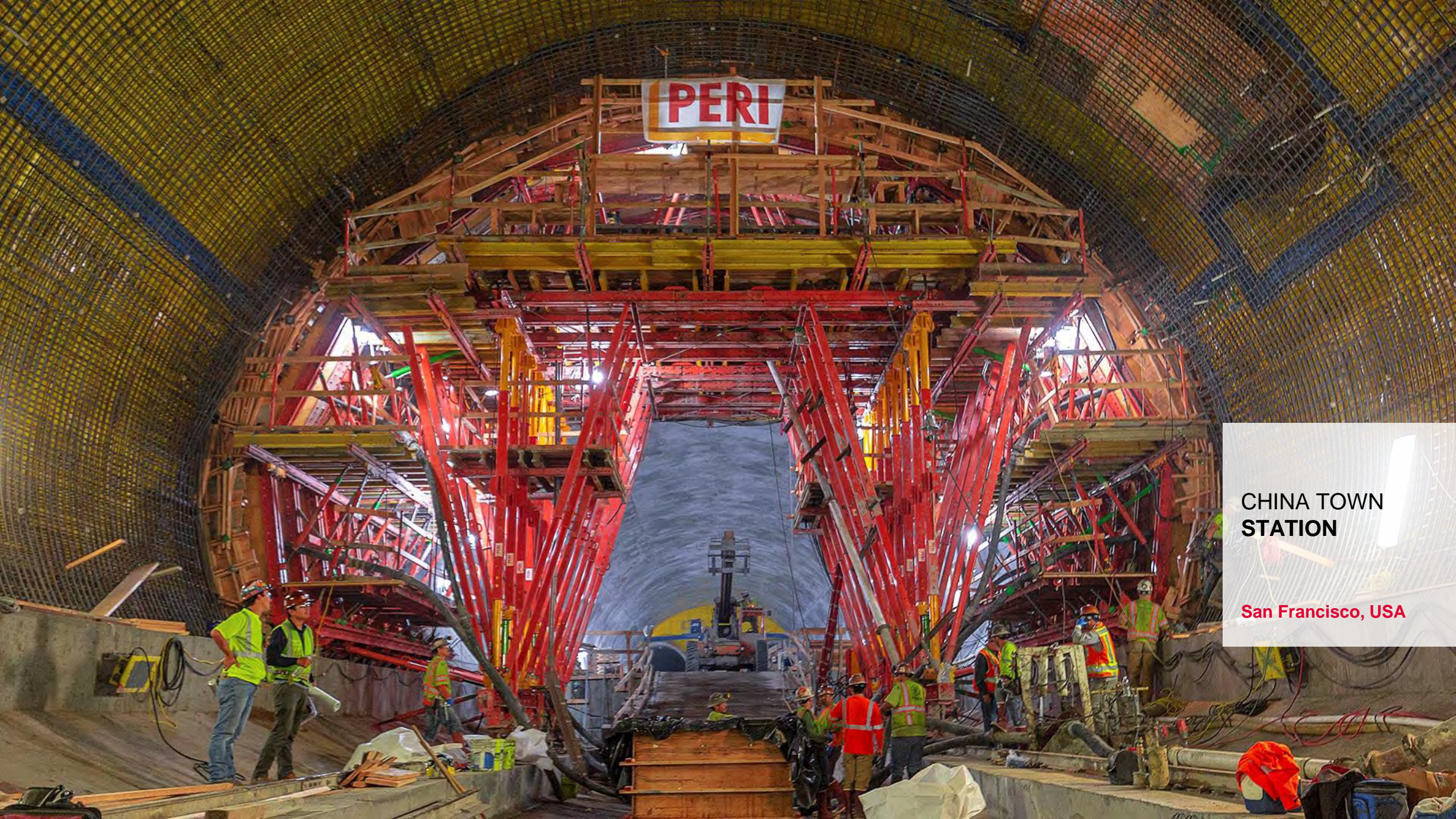


**MERSEY  
GATEWAY**

**Great Britain**







**CHINA TOWN  
STATION**

**San Francisco, USA**



**OTMS  
TANK FARM  
SALDANHA**

**South Africa**



VICTORIA &  
ALBERT MUSEUM

Dundee, Great Britain



**BEE'AH  
HEADQUARTERS**

**Sharjah, United Arab  
Emirates**



**TERFENER INN  
BRIDGE**

**Terfen, Austria**



**„PORTA DEL SUD“  
RAILWAY STATION**

**Neapel Afragola, Italy**



**KULA VODNO  
RADIO TOWER**

**Skopje, North Macedonia**



HONG-KONG-  
ZHUHAI-MACAO  
BRIDGE (HZMB)  
PROJECT

China





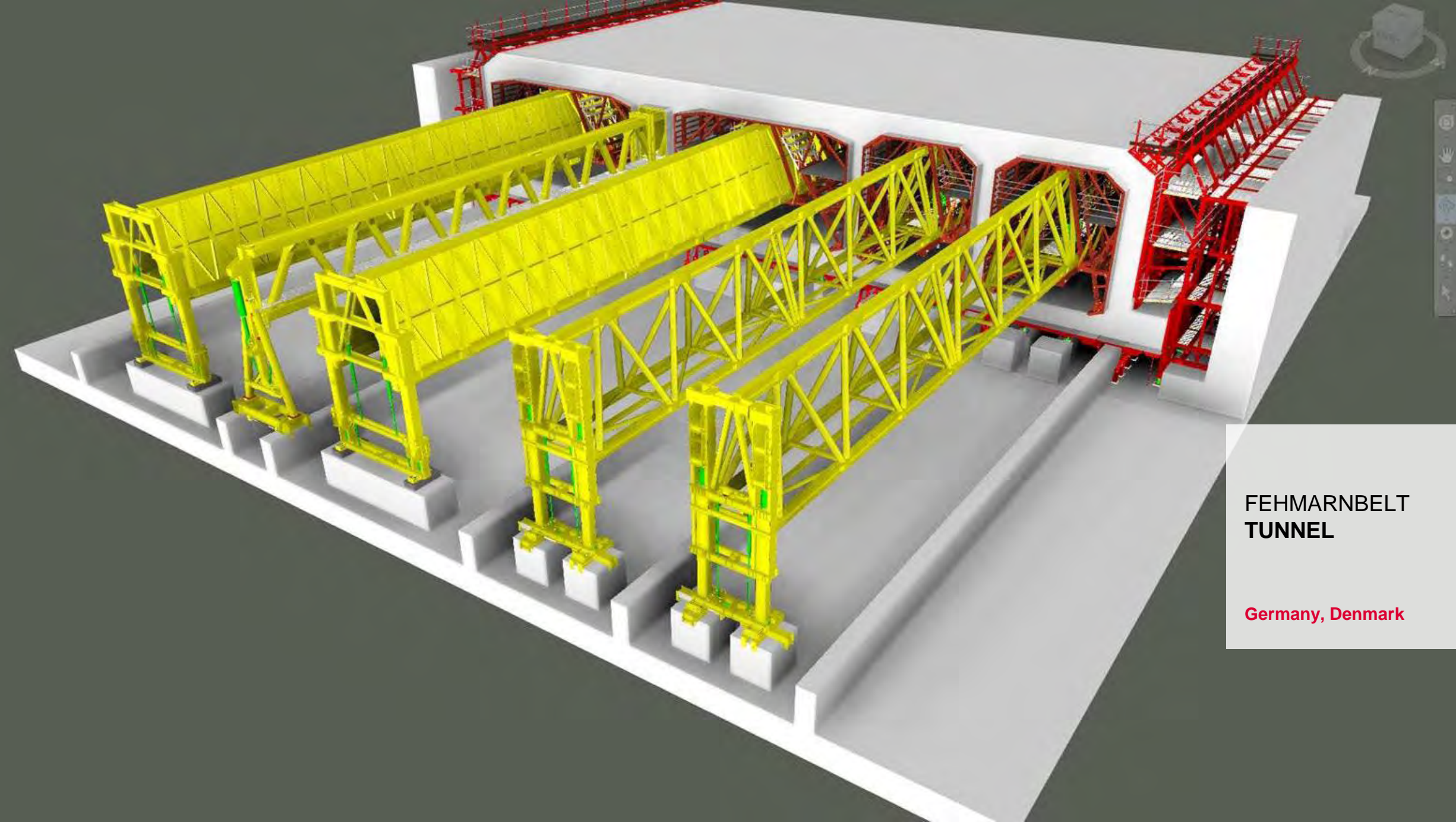
## **WATERTOWER**

**Gasperich, Luxembourg**



**SWISS KRONO**

**Barnwell, USA**



**FEHMARNBELT  
TUNNEL**

Germany, Denmark

# THANK YOU, FOR YOUR ATTENTION

---

Any question?



